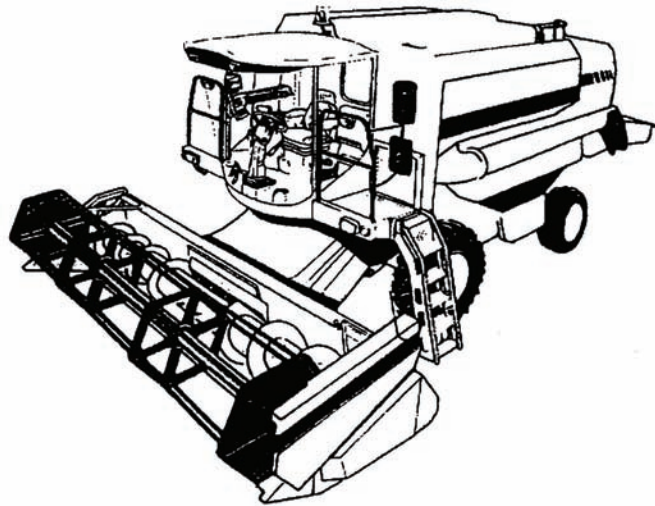


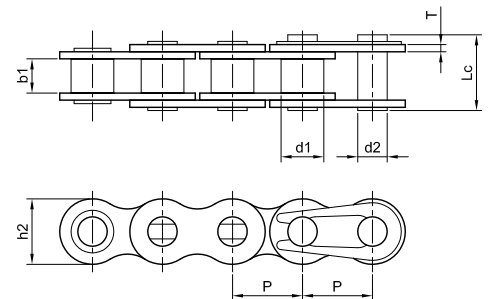


Super Ag Chain



Features

- » Custom designed and manufactured drive chain for the Agricultural industry
- » Premium quality material, factory pre loaded
- » Increased tensile strength and working loads
- » Advanced heat treating process - providing superior abrasion resistance and service life
- » 12 months standard factory replacement warranty.



KANA Chain No.	Pitch		Width b/w Inner Plates b1	Roller Diam. d1	Pin			Link plate h2	Average tensile strength		Approx. weight Kg/m	Links per 10 foot
	in.	mm			Diam.	Length	T		kgf	kN		
American Standard Super-Ag Chain												
40-1-AG	0.500	12.70	7.95	7.95	3.97	17.55	1.50	11.7	1950	19.1	0.61	240
50-1-AG	0.625	18.88	9.53	10.16	5.09	21.75	2.00	14.6	3150	30.8	1.01	192
60-1-AG	0.750	19.05	12.70	11.91	5.96	26.80	2.40	17.5	4500	44.1	1.49	160
80-1-AG	1.000	25.40	15.88	15.88	7.94	35.25	3.20	23.0	8000	78.4	2.50	120
American Standard Heavy Duty Super-Ag Chain												
50-1-AH	0.625	15.88	9.53	10.16	5.09	23.40	2.40	14.6	3840	37.6	1.43	192
60-1-AH	0.750	19.05	12.70	11.91	5.96	30.00	3.20	17.5	5700	55.9	1.77	160
British Standard Super-Ag Chain												
08-1-AG	0.500	12.70	7.75	8.51	4.45	-	1.50	11.7	1950	19.1	0.65	240
10-1-AG	0.625	15.88	9.65	10.16	5.08	-	1.65	14.6	2600	25.5	0.92	192
12-1-AG	0.750	19.05	11.68	12.07	5.72	-	1.80	16.0	3350	32.9	1.24	160

British Standard Roller Chain

Simplex

DIN/ISO Chain No	Pitch P		Roller Diameter d1 _{max} [mm]	Inner Width b1 _{min} [mm]	Pin Diameter d2 _{max} [mm]	Pin Length		Inner Plate Depth h2 _{max} [mm]	Plate Thickness t T _{max} [mm]	Weight per metre [kg/m]
	[in]	[mm]				L _{max} [mm]	Lc _{max} [mm]			
04B-1		6.00	4.00	2.80	1.85	6.8	7.8	5.0	0.6	0.11
05B-1		8.00	5.00	3.00	2.31	8.2	8.9	7.1	0.8	0.20
06B-1*	3/8	9.53	6.35	5.72	3.28	13.2	14.1	8.2	1.3	0.41
08B-1	1/2	12.70	8.51	7.75	4.45	16.7	18.2	11.8	1.6	0.69
10B-1	5/8	15.88	10.16	9.65	5.08	19.5	20.9	14.7	1.7	0.93
12B-1	3/4	19.05	12.07	11.68	5.72	22.5	24.2	16.0	1.85	1.15
16B-1	1	25.40	15.88	17.02	8.28	36.1	37.4	21.0	4.2 3.1	2.71
20B-1	1 1/4	31.75	19.05	19.56	10.19	41.3	45.0	26.4	4.5 3.5	3.70
24B-1	1 1/2	38.10	25.40	25.40	14.63	53.4	57.8	33.2	6.0 4.8	7.10
28B-1	1 3/4	44.45	27.94	30.99	15.90	65.1	69.5	36.7	7.5 6.0	8.50
32B-1	2	50.80	29.21	30.99	17.81	66.0	71.0	42.0	7.0 6.0	10.3
40B-1	2 1/2	63.50	39.37	38.10	22.89	82.2	89.2	53.0	8.5 8.0	16.4
48B-1	3	76.20	48.26	45.72	29.24	99.1	107.0	63.8	12.0 10.0	25.0

Duplex

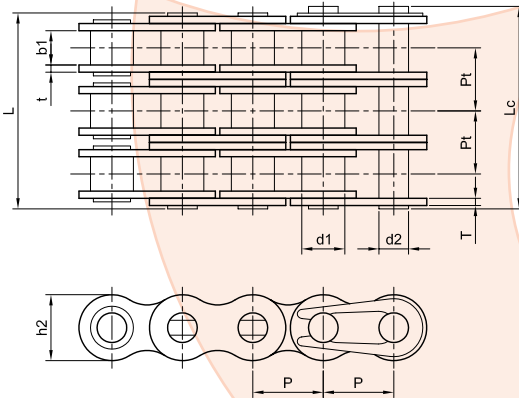
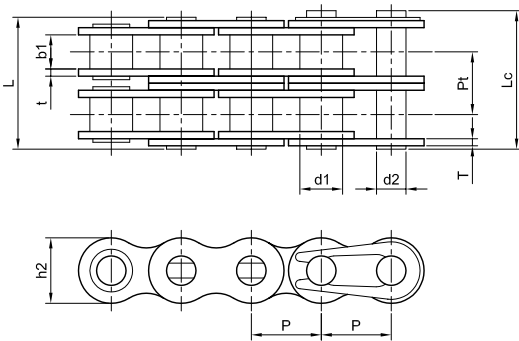
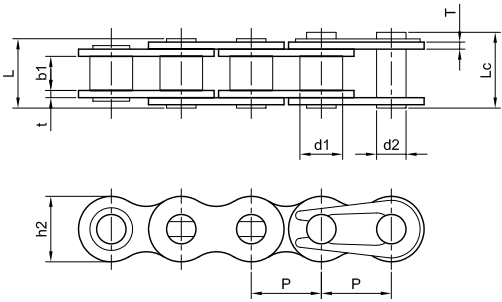
DIN/ISO Chain No	Pitch P		Roller Diameter d1 _{max} [mm]	Inner Width b1 _{min} [mm]	Pin Diameter d2 _{max} [mm]	Pin Length		Inner Plate Depth h2 _{max} [mm]	Plate Thickness t T _{max} [mm]	Transverse Pitch Pt [mm]	Weight per metre [kg/m]
	[in]	[mm]				L _{max} [mm]	Lc _{max} [mm]				
05B-2		8.00	5.00	3.00	2.31	13.9	14.5	7.1	0.8	5.64	0.33
06B-2*	3/8	9.53	6.35	8.75	3.28	23.4	24.5	8.2	1.3	10.24	0.77
08B-2	1/2	12.70	8.51	7.75	4.45	31.2	32.2	11.8	1.6	13.92	1.34
10B-2	5/8	15.88	10.16	9.65	5.08	36.1	37.5	14.7	1.7	16.59	1.84
12B-2	3/4	19.05	12.07	11.68	5.72	42.0	43.6	16.0	1.85	19.46	2.31
16B-2	1	25.40	15.88	17.02	8.28	68.0	69.3	21.0	4.2 3.1	31.88	5.42
20B-2	1 1/4	31.75	19.05	16.56	10.19	77.8	81.5	26.4	4.5 3.5	36.45	7.20
24B-2	1 1/2	38.10	25.40	25.40	14.63	101.7	106.2	33.2	6.0 4.8	48.36	13.4
28B-2	1 3/4	44.45	27.94	30.99	15.90	124.6	129.1	36.7	7.5 6.0	59.56	16.6
32B-2	2	50.80	29.21	30.99	17.81	124.6	129.6	42.0	7.0 6.0	58.55	21.0
40B-2	2 1/2	63.50	39.37	38.10	22.89	154.5	161.5	53.0	8.5 8.0	72.29	32.0
48B-2	3	76.20	48.26	45.72	29.24	190.4	198.2	63.8	12.0 10.0	91.21	50.0

Triplex

DIN/ISO Chain No	Pitch P		Roller Diameter d1 _{max} [mm]	Inner Width b1 _{min} [mm]	Pin Diameter d2 _{max} [mm]	Pin Length		Inner Plate Depth h2 _{max} [mm]	Plate Thickness t T _{max} [mm]	Transverse Pitch Pt [mm]	Weight per metre [kg/m]
	[in]	[mm]				L _{max} [mm]	Lc _{max} [mm]				
05B-3		8.00	5.00	3.00	2.31	19.5	20.2	7.1	0.8	5.64	0.48
06B-3*	3/8	9.53	6.35	5.72	3.28	33.5	34.6	8.2	1.3	10.24	1.16
08B-3	1/2	12.70	8.51	7.75	4.45	45.1	46.1	11.8	1.6	13.92	2.03
10B-3	5/8	15.88	10.16	9.65	5.08	52.7	54.1	14.7	1.7	16.59	2.77
12B-3	3/4	19.05	12.07	11.68	5.72	61.5	63.1	16.0	1.85	19.46	3.46
16B-3	1	25.40	15.88	17.02	8.28	99.8	101.2	21.0	4.2 3.1	31.88	8.13
20B-3	1 1/4	31.75	19.05	19.56	10.19	114.2	117.9	26.4	4.5 3.5	36.45	10.8
24B-3	1 1/2	38.10	25.40	25.40	14.63	150.1	154.6	33.2	6.0 4.8	48.36	20.1
28B-3	1 3/4	44.45	27.94	30.99	16.90	184.2	188.7	36.7	7.5 6.0	59.56	24.9
32B-3	2	50.80	29.21	30.99	17.81	183.2	188.2	42.0	7.0 6.0	58.55	31.6
40B-3	2 1/2	63.50	39.37	38.10	22.89	226.8	233.8	53.0	8.5 8.0	72.29	48.1
48B-3	3	76.20	48.26	45.72	29.24	281.6	289.4	63.8	12.0 10.0	91.21	75.0

* Straight sideplates.

British Standard Chain



BS Chain part numbers

When placing an order please specify the product code which is composed in accordance with the following example:

C **H** **B** **S** **08** - **3** - **00** - **A**

Prefix Type Size Rows Specialty Part

Prefix

CH = Chain

Type

BS = British Standard

Size

Size in 1/16". Eg. 08 = 8/16" = 1/2"

Rows

1 = Simplex, 2 = Duplex, 3 = Triplex

Specialty

00 = Standard	HC = HD Cotter Pin
SS = Stainless Steel	HP = Hollow Pin
HD = Heavy Duty	SP = SS Hollow Pin
HS = HD SS	SL = Self Lubricating
NP = Nickel Plated	SB = Side Bow
CP = Cotter Pin	OR = O-Ring

Part

A = Chain
 C = Conn Link
 O = Offset (Crank) link
 R = Chain (non std reel)

ANSI Standard Roller Chain

Simplex

ANSI Chain No.	Pitch P		Roller Diameter d1 _{max} [mm]	Inner Width b1 _{min} [mm]	Pin Diameter d2 _{max} [mm]	Pin Length		Inner Plate Depth h2 _{max} [mm]	Plate Thickness T _{max} [mm]	Weight per metre [kg/m]
	[in]	[mm]				L _{max} [mm]	Lc _{max} [mm]			
15*		4.76	2.48	2.38	1.62	6.1	6.9	4.3	0.6	0.08
25*		6.35	3.30	3.18	2.31	7.9	8.4	6.0	0.8	0.15
35*	3/8	9.53	5.08	4.77	3.58	12.4	13.2	9.0	1.3	0.33
41	1/2	12.70	7.77	6.25	3.58	13.8	15.0	9.9	1.3	0.41
40	1/2	12.70	7.95	7.85	3.96	16.6	17.8	12.0	1.5	0.62
50	5/8	15.88	10.16	9.40	5.08	20.7	22.2	15.1	2.0	1.02
60	3/4	19.05	11.91	12.57	5.94	25.9	27.7	18.0	2.4	1.50
80	1	25.40	15.88	15.75	7.92	32.7	35.0	24.0	3.3	2.60
100	1 1/4	31.75	19.05	18.90	9.53	40.4	44.7	30.0	4.0	3.91
120	1 1/2	38.10	22.23	25.22	11.10	50.3	54.3	35.7	4.8	5.62
140	1 3/4	44.45	25.40	25.22	12.70	54.4	59.0	41.0	5.6	7.50
160	2	50.80	28.58	31.55	14.27	64.8	69.6	47.8	6.4	10.1
180	2 1/4	57.15	35.71	35.48	17.46	72.8	78.6	53.6	7.2	13.5
200	2 1/2	63.50	39.68	37.85	19.85	80.3	87.2	60.0	8.0	16.2
240	3	76.20	47.63	47.35	23.81	95.5	103.0	72.4	9.5	23.2

Duplex

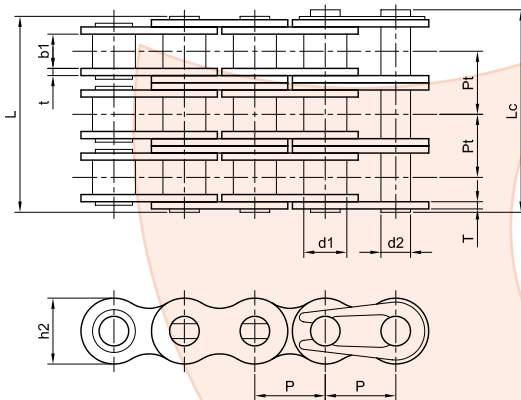
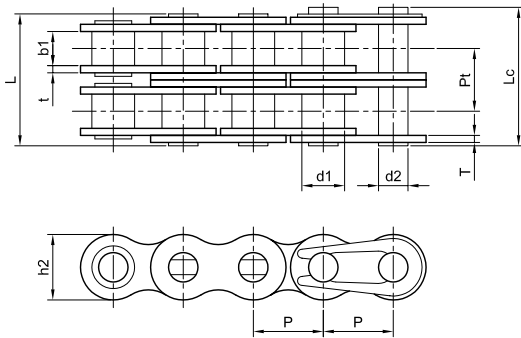
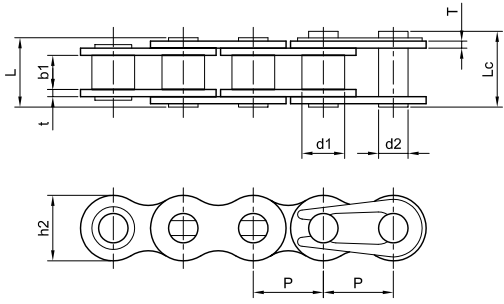
ANSI Chain No.	Pitch P		Roller Diameter d1 _{max} [mm]	Inner Width b1 _{min} [mm]	Pin Diameter d2 _{max} [mm]	Pin Length		Inner Plate Depth h2 _{max} [mm]	Plate Thickness T _{max} [mm]	Transverse Pitch Pt [mm]	Weight per metre [kg/m]
	[in]	[mm]				L _{max} [mm]	Lc _{max} [mm]				
25-2*		6.35	3.30	3.18	2.31	14.5	15.0	6.0	0.8	6.40	0.28
35-2*	3/8	9.53	5.08	4.77	3.58	22.5	23.3	9.0	1.3	10.13	0.63
41-2	1/2	12.70	7.77	6.25	3.58	25.7	26.9	9.9	1.3	11.95	0.81
40-2	1/2	12.70	7.95	7.85	3.96	31.0	32.2	12.0	1.5	14.38	1.12
50-2	5/8	15.88	10.17	9.40	5.08	28.9	40.4	15.1	2.0	18.11	2.00
60-2	3/4	19.05	11.91	12.57	5.94	48.8	50.5	18.0	2.4	22.78	2.92
80-2	1	25.40	15.88	15.75	7.92	62.7	64.3	24.0	3.3	29.29	5.15
100-2	1 1/4	31.75	19.05	18.90	9.53	76.4	80.5	30.0	4.0	35.76	7.80
120-2	1 1/2	38.10	22.23	25.22	11.10	95.8	99.7	35.7	4.8	45.44	11.7
140-2	1 3/4	44.45	25.40	25.22	12.70	103.3	107.9	41.0	5.6	48.87	15.1
160-2	2	50.80	28.58	34.55	14.27	123.3	128.1	47.8	6.4	58.55	20.1
180-2	2 1/4	57.15	35.71	35.48	17.46	138.6	144.4	53.6	7.2	65.84	29.2
200-2	2 1/2	63.50	39.68	37.85	19.85	151.9	158.8	60.0	8.0	71.55	32.2
240-2	3	76.20	47.63	47.35	23.81	183.4	190.8	72.4	9.5	87.83	45.2

Triplex

ANSI Chain No.	Pitch P		Roller Diameter d1 _{max} [mm]	Inner Width b1 _{min} [mm]	Pin Diameter d2 _{max} [mm]	Pin Length		Inner Plate Depth h2 _{max} [mm]	Plate Thickness T _{max} [mm]	Transverse Pitch Pt [mm]	Weight per metre [kg/m]
	[in]	[mm]				L _{max} [mm]	Lc _{max} [mm]				
25-3		6.35	3.30	3.18	2.31	21.0	21.5	6.00	0.8	6.40	0.44
35-3*	3/8	9.53	5.08	4.77	3.58	32.7	33.5	9.00	1.3	10.13	1.05
40-3	1/2	12.70	7.95	7.85	3.96	45.4	46.6	12.00	1.5	14.38	1.90
50-3	5/8	15.88	10.16	9.40	5.08	57.0	58.5	15.09	2.0	18.11	3.09
60-3	3/4	19.05	11.91	12.57	5.94	71.5	73.3	18.00	2.4	22.78	4.54
80-3	1	25.40	15.88	15.75	7.92	91.7	93.6	24.00	3.3	29.29	7.89
100-3	1 1/4	31.75	19.05	18.90	9.53	112.2	116.3	30.00	4.0	35.76	11.8
120-3	1 1/2	38.10	22.23	25.22	11.10	141.4	145.2	35.70	4.8	45.44	17.5
140-3	1 3/4	44.45	25.40	25.22	12.70	152.2	156.8	41.00	5.6	48.87	22.2
160-3	2	50.80	28.58	31.55	14.27	181.8	186.6	47.80	6.4	58.55	30.0
180-3	2 1/4	57.15	35.71	35.48	17.46	204.4	210.2	53.60	7.2	65.84	38.2
200-3	2 1/2	63.50	39.68	37.85	19.85	223.5	230.4	60.00	8.0	71.55	49.0
240-3	3	76.20	47.63	48.35	23.81	271.3	278.6	72.39	9.5	87.83	71.6

*Bush chain : D1 in the table indicates the external diameter of the bush.

ANSI Standard Chain



ANSI Chain part numbers

When placing an order please specify the product code which is composed in accordance with the following example:

C	H	A	S	0	8	0	-	3	-	0	0	-	A
Prefix	Type	Size			Rows	Specialty	Part						

Prefix

CH = Chain

Type

AS = American (ANSI) Standard

Size

Size in 1/8". Eg. 040/8" = 1/2"

Rows

1 = Simplex, 2 = Duplex, 3 = Triplex

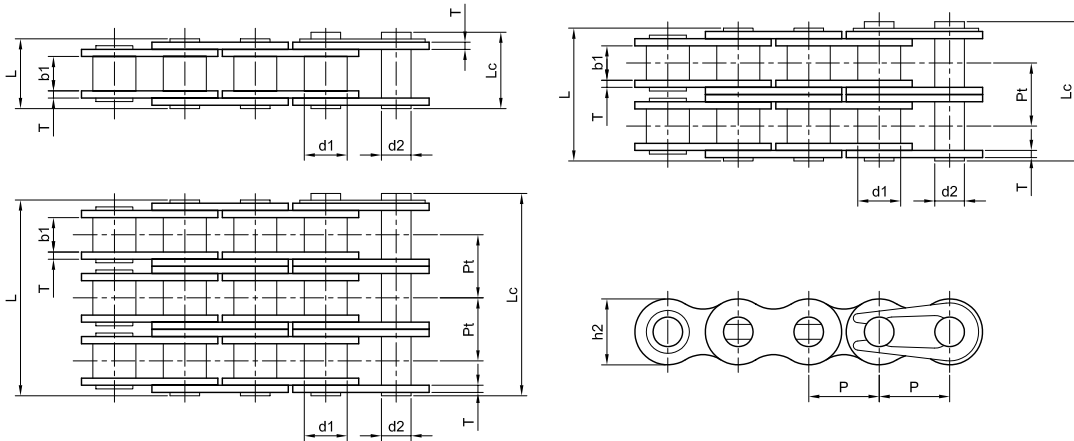
Specialty

00 = Standard	HC = HD Cotter Pin
SS = Stainless Steel	HP = Hollow Pin
HD = Heavy Duty	SP = SS Hollow Pin
HS = HD SS	SL = Self Lubricating
NP = Nickel Plated	SB = Side Bow
CP = Cotter Pin	OR = O-Ring

Part

A = Chain
 C = Conn Link
 O = Offset (Crank) link
 R = Chain (non std reel)

Heavy Duty Roller Chain



Simplex

ANSI Chain No.	Pitch P		Roller Diameter d1 _{max} [mm]	Inner Width b1 _{min} [mm]	Pin Diameter d2 _{max} [mm]	Pin Length		Inner Plate Depth h2 _{max} [mm]	Plate Thickness T _{max} [mm]	Transverse Pitch Pt [mm]	Weight per metre [kg/m]
	[in]	[mm]				L _{max} [mm]	Lc _{max} [mm]				
35H	3/8	9.53	5.08	4.77	3.58	13.3	14.3	9.0	1.5		0.41
40H	1/2	12.70	7.95	7.85	3.96	18.8	19.9	12.0	2.0		0.82
50H	5/8	15.88	10.16	9.40	5.08	22.1	23.4	15.1	2.4		1.25
60H	3/4	19.05	11.91	12.57	5.94	29.2	31.0	18.0	3.3		1.87
80H	1	25.40	15.88	15.75	7.92	36.2	37.7	24.0	4.0		3.10
100H	1 1/4	31.75	19.05	18.90	9.53	43.6	46.9	30.0	4.8		4.52
120H	1 1/2	38.10	22.23	25.22	11.10	53.5	57.5	35.7	5.6		6.60
140H	1 3/4	44.45	25.40	25.22	12.70	57.6	62.2	41.0	6.4		8.30
160H	2	50.80	28.58	31.55	14.27	68.2	73.0	47.8	7.2		10.3
200H	2 1/2	63.50	39.68	37.85	19.85	86.6	93.5	60.0	9.5		19.2

Duplex

60H-2	3/4	19.05	11.91	12.57	5.94	55.3	57.1	18.0	3.3	26.11	3.71
80H-2	1	25.40	15.88	15.75	7.92	68.8	70.3	24.0	4.0	32.59	6.15
100H-2	1 1/4	31.75	19.05	18.90	9.53	82.7	86.0	30.0	4.8	39.09	9.03
120H-2	1 1/2	38.10	22.23	25.22	11.10	102.4	106.4	35.7	5.6	48.87	13.1
140H-2	1 3/4	44.45	25.40	25.22	12.70	109.8	114.4	41.0	6.4	52.20	16.6
160H-2	2	50.80	28.58	31.55	14.27	130.1	134.9	47.8	7.2	61.90	20.2
200H-2	2 1/2	63.50	39.68	37.85	19.85	164.9	171.8	60.0	9.5	78.31	38.1

Triplex

60H-3	3/4	19.05	11.91	12.57	5.94	81.4	83.2	18.0	3.3	26.11	5.54
80H-3	1	25.40	15.88	15.75	7.92	101.4	102.9	24.0	4.0	32.59	9.42
100H-3	1 1/4	31.75	19.05	18.90	9.53	121.8	125.1	30.0	4.8	39.09	13.0
120H-3	1 1/2	38.10	22.23	25.22	11.10	151.2	155.2	35.7	5.6	48.87	19.6
140H-3	1 3/4	44.45	25.40	25.22	12.70	162.0	166.6	41.0	6.4	52.20	24.9
160H-3	2	50.80	28.58	31.55	14.27	192.0	196.8	47.8	7.2	61.90	30.1
800H-3	2 1/2	63.50	39.68	37.85	19.85	243.2	250.1	60.0	9.5	78.31	57.1

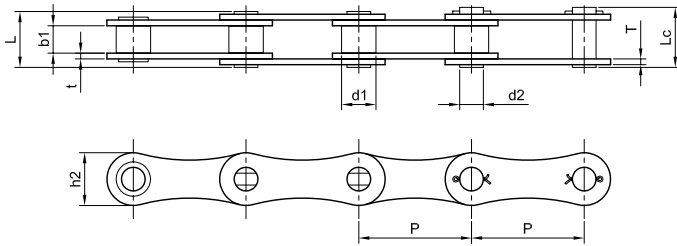
Heavy Duty (ANSI) roller chain part numbers

When placing an order please specify the product code which is composed in accordance with the following example:

C H A S O 8 0 - 1 - H D - A
 Prefix Series Size Rows Type Part

Prefix: CH = Chain
Series: AS = American (ANSI) Standard
Size: Size in 1/8". Eg. 1" = 080/8"
Rows: 1 = Simplex, 2 = Duplex, 3 = Triplex
Type: HD = Heavy Duty
Part: A = Chain, C = Conn Link, O = Offset (Crank) Link
 R = Chain (non std reel)

Double Pitch Transmission Chain



ANSI Chain No.	Pitch P		Roller Diameter d1 _{max} [mm]	Inner Width b1 _{min} [mm]	Pin Diameter d2 _{max} [mm]	Pin Length		Inner Plate Depth h2 _{max} [mm]	Plate Thickness t T _{max} [mm]	Weight per metre [kg m]
	[in]	[mm]				L _{max} [mm]	Lc _{max} [mm]			
A2040	1	25.40	7.95	7.85	3.96	16.6	17.8	12.0	1.5	0.42
A2050	1 1/4	31.75	10.16	9.40	5.08	20.7	22.2	15.0	2.0	0.73
A2060	1 1/2	38.10	11.91	12.57	5.94	25.9	27.7	18.0	2.4	1.02
A2080	2	50.80	15.88	15.75	7.92	32.7	36.5	24.0	3.3	1.70
A2100	2 1/2	63.50	19.05	18.90	9.53	40.4	44.7	30.0	4.0	2.55
A2120	3	76.20	22.23	25.22	11.10	50.3	54.3	35.7	4.8	4.06

Double Pitch chain part numbers

When placing an order please specify the product code which is composed in accordance with the following example:

C H A 2 0 4 0 - 0 0 - A
 Prefix Series Size Specialty Part

Prefix: CH = Chain

Series: A = A Series (transmission), C = C Series (conveyor)

Size:

Small Roller : 2040, 2050, 2060, 2080, 2100, 2120, 2120, 2160, 2160,

Large Roller : 2042, 2052, 2062, 2082, 2102, 2122, 2122, 2162, 2162

Specialty :

00 = Standard HC = HD Cotter Pin

SS = Stainless Steel HP = Hollow Pin

HD = Heavy Duty SP = SS Hollow Pin

HS = HD SS NP = Nickel Plated

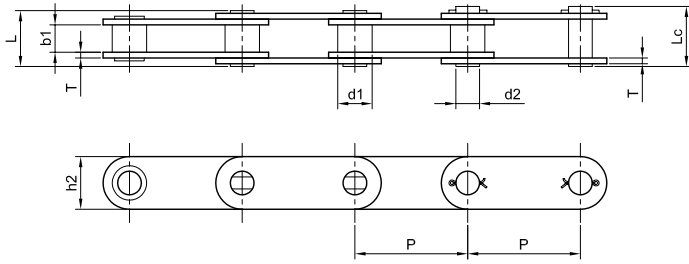
CP = Cotter Pin

Part: A = Chain, C = Conn Link, O = Offset (Crank) Link

R = Chain (non std reel)

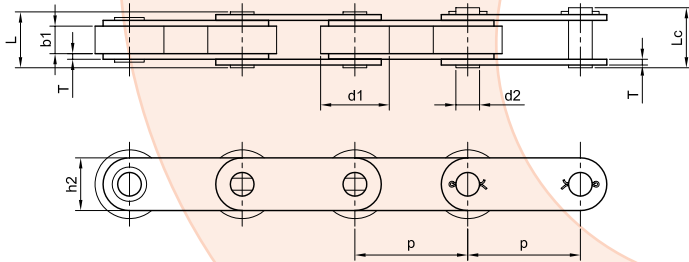
Double Pitch Conveyor Chain

Small Roller



ANSI Chain No.	Pitch P		Roller Diameter d1 _{max} [mm]	Inner Width b1 _{min} [mm]	Pin Diameter d2 _{max} [mm]	Pin Length		Inner Plate Depth h2 _{max} [mm]	Plate Thickness t/T _{max} [mm]	Weight per metre [kg/m]
	[in]	[mm]				L _{max} [mm]	Lc _{max} [mm]			
C2040	1	25.4	7.95	7.85	3.96	16.6	17.8	12.0	1.5	0.50
C2040H	1	25.4	7.95	7.85	3.96	18.8	19.9	12.0	2.0	0.65
C2050	1 ¹ / ₄	31.8	10.16	9.40	5.08	20.7	22.2	15.0	2.0	0.78
C2060	1 ¹ / ₂	38.1	11.91	12.57	5.94	25.9	27.7	18.0	2.4	1.12
C2060H	1 ¹ / ₂	38.1	11.91	15.57	5.94	29.2	31.6	18.0	3.3	1.44
C2080	2	50.8	15.88	15.57	7.92	32.7	36.5	24.0	3.3	2.08
C2080H	2	50.8	15.88	15.57	7.92	36.2	39.4	24.0	4.0	2.54
C2100	2 ¹ / ₂	63.5	19.05	18.90	9.53	40.4	44.7	30.0	4.0	3.01
C2100H	2 ¹ / ₂	63.5	19.05	18.90	9.53	43.6	46.9	30.0	4.8	3.56
C2120	3	76.2	22.23	25.22	11.10	50.3	54.3	35.7	4.8	4.66
C2120H	3	76.2	22.23	25.22	11.10	53.5	57.5	35.7	5.6	5.26
C2160	4	101.6	28.58	31.75	14.27	64.8	69.6	47.8	6.4	8.15
C2160H	4	101.6	28.58	31.75	14.27	68.2	73.0	47.8	7.2	9.06

Large Roller



ANSI Chain No.	Pitch P		Roller Diameter d1 _{max} [mm]	Inner Width b1 _{min} [mm]	Pin Diameter d2 _{max} [mm]	Pin Length		Inner Plate Depth h2 _{max} [mm]	Plate Thickness t/T _{max} [mm]	Weight per metre [kg/m]
	[in]	[mm]				L _{max} [mm]	Lc _{max} [mm]			
C2042	1	25.4	15.88	7.85	3.96	16.6	17.8	12.0	1.5	0.84
C2052	1 ¹ / ₄	31.8	19.05	9.40	5.08	20.7	22.2	15.0	2.0	1.27
C2062	1 ¹ / ₂	38.1	22.23	12.57	5.94	25.9	27.7	18.0	2.4	1.61
C2062H	1 ¹ / ₂	38.1	22.23	15.57	5.94	29.2	31.6	18.0	3.3	2.07
C2082	2	50.8	28.58	15.57	7.92	32.7	36.5	24.0	3.3	3.12
C2082H	2	50.8	28.58	15.57	7.92	36.2	39.4	24.0	4.0	3.58
C2102	2 ¹ / ₂	63.5	36.67	18.90	9.53	40.4	44.7	30.0	4.0	4.83
C2102H	2 ¹ / ₂	63.5	39.67	18.90	9.53	43.6	46.9	30.0	4.8	5.38
C2122	3	76.2	44.45	25.22	11.10	50.3	54.3	35.7	4.8	7.66
C2122H	3	76.2	44.45	25.22	11.10	53.5	57.5	35.7	5.6	8.26
C2162	4	101.6	57.15	31.75	14.27	64.8	69.6	47.8	6.4	13.0
C2162H	4	101.6	57.15	31.75	14.27	68.2	73.0	47.8	7.2	12.8

