

DC Motors & Drives

Baldor manufactures a very wide range of permanent magnet and wound field DC industrial motors from 15kW to 1200kW. The following overview covers a selection of our full range.

All Baldor DC motors are covered by applicable UL, CSA and CE approvals and a warranty you would expect from a World-Class manufacturer.

For full details of our complete range of DC industrial motors and controls contact your local Baldor representative, see our 501 catalog or visit www.baldor.com



General Purpose

In addition to the stock IEC frame models in this Catalog, Baldor have an extensive range of NEMA frame 90 or 180 VDC motors including permanent magnet designs up to 3.7kW and wound field designs through to 550kW.

Most designs allow a tachometer to be added for closed loop applications.

Applications:

- Conveyors
- Extruders
- Winders
- Printing presses
- Metering pumps
- etc.



Washdown

Permanent magnet DC motors are available with a choice for standard painted, stainless steel and paint-free finishes. They may be paired with our KB Washdown DC controls.

Applications:

- Conveyors
- Packing equipment
- Food industry and other adjustable speed uses requiring high pressure hosedown
- etc.



Gearmotors

Baldor offers a range of DC permanent magnet gearmotors in both right angle and parallel shaft configurations.

Applications:

- Conveyors
- Medical and laboratory equipment
- Printing presses
- Commercial ovens
- Machine tools and other applications requiring adjustable speed
- etc.



Integral Tachometer

Baldor's complete range of integral tachometer motors also extends to NEMA frame motors. Its compact design fits into many locations where a conventional motor won't fit.

Applications:

- Precision metering
- Pumps
- Tensioning
- etc.



Low Voltage Power Motors

Baldor Power Motors are designed for fixed-speed operation from a generator or battery power supply. These are 20% compound-wound motors.

Applications:

- Cranes
- Hoists
- Conveyors
- Augers
- etc.

Metric Mount Permanent magnet SCR Drive Motor, TENV and TEFC, B3/B5, B3/B14

0.15 thru 3.7kw

IEC D56 thru D112, B3/B5, B3/B14



B5 Flange

Applications: Conveyors, mixers, packaging machinery

Features:

- IEC Frame
- B3/B5 Flange or B3/B14 Flange
- Permanent Magnet
- TEFC or TENV
- IP54
- Continuous Duty
- Class F Insulation
- 20:1 Speed range with Constant Torque
- Integral Tachometer fitted to motors with 'VPT' prefix

Motor power kW	Base speed RPM	IEC Frame size	Catalog No.	Mult. Sym.	Type Number	Arm VDC	Arm FL Amps	Aprx. Wt (kg)	Notes
0.15	1750	D56-B14	VP1356-14	D	135	180	1.1	3.0	*¥
0.15	1750	D63/B14	VP7424-14	D	135	180	1.1	4.7	*¥
0.15	1750	D63D	VP7424D	D	135	180	1.1	4.9	¥
0.18	3000	D63D	VP7428D	D	135	180	1.2	5.0	¥
0.18	1750	D63D	VP3312D	D	3320P	180	1.25	11.4	¥
0.18	1750	D63-B14	VP3312-14	D	3320P	180	1.25	11.0	*¥
0.18	1750	D71D	VP3311D	D	3320P	180	1.25	11.0	¥
0.25	3000	D71D	VP3318D	D	3320P	180	1.7	13.0	¥
0.25	1750	D71D	VP3316D	D	3327P	180	1.6	13.0	¥
0.37	3000	D63D	VP3327D	D	3327P	180	2.5	12.0	^
0.37	3000	D71D	VP3328D	D	3327P	180	2.5	14.0	¥
0.37	3000	D71-B14	VP3428-14	D	3416P	180	2.5	14.0	*1
0.37	1750	D71D	VP3326D	D	3336P	180	2.5	14.0	¥
0.37	1750	D71-B14	VP3326-14	D	3336P	180	2.5	14.0	¥2
0.37	1750	D71D	VPT3326D	D	3336P	180	2.5	18.0	¥
0.56	3000	D71D	VP3437D	D	3420P	180	3.5	17.0	
0.56	1750	D80-B14	VP3436-14	D	3428P	180	3.7	19.0	*
0.56	1750	D80D	VP3436D	D	3428P	180	3.7	19.1	
0.56	3000	D80D	VP3439D	D	3420P	180	3.6	18.0	
0.56	3000	D80-B14	VP3439-14	D	3420P	180	3.6	18.0	*2
0.56	1750	D71D	VP3438D	D	3428P	180	3.7	19.0	
0.75	3000	D80D	VP3458D	D	3428P	180	5.1	19.0	
0.75	3000	D80-B14	VP3458-14	D	3428P	180	5.1	19.0	*2
0.75	1750	D80-B14	VP3455-14	D	3435P	180	5.0	20.0	*2
0.75	1750	D80D	VP3455D	D	3435P	180	5.0	21.2	
0.75	1750	D80D	VPT3455D	D	3435P	180	5.0	25.4	
1.1	3000	D90D	VP3468D	D	3432P	180	7.7	21.2	
1.1	3000	D80-B14	VP3468-14	D	3432P	180	7.7	21.2	*2
1.1	1750	D90-B14	VP3575-14	D	3536P	180	7.7	33.2	*2
1.1	1750	D90D	VP3575D	D	3536P	180	7.7	31.5	
1.5	3000	D90D	VP3588D	D	3536P	180	10.0	31.5	
1.5	3000	D90-B14	VP3588-14	D	3536P	180	10.0	31.5	*2
1.5	1750	D90D	VP3585D	D	3548P	180	9.6	35.0	
1.5	1750	D90-B14	VP3585-14	D	3548P	180	9.6	35.0	*2
1.5	1750	D90D	VPT3585D	D	3548P	180	9.6	37.0	
2.2	1750	D112D	VP3603D	D	3649P	180	14.0	58.0	
2.2	1750	D112SD	VPT3603D	D	3649P	180	14.0	59.0	
3.7	1750	D112D	VP3605D	D	3681P	180	24.5	75.0	

NOTES:

Prefix 'V' = IEC metric flange and non standard foot mount.

Prefix '- T' = Tachometer fitted 50 VDC/KRPM.

¥ = TENV.

*Frame/B14 motors have feet and IEC 'B14 - C' face.

Type N#3000 and larger will accept Tach mounting kits.

^ = Does not accept Tachometer mounting kits.

1 Shaft centre height = 76mm.

2 Shaft centre height = 89mm.

**Metric Mount Shunt wound SCR Drive
Motor TEFC, B3/B5**

0.37 thru 2.2kW

IEC D71 thru D132D



Features:

- IEC Frame, TEFC
- B3 & B5 Metric Flange Mount
- Shunt Wound
- Class F Insulation
- Continuous Duty
- IP54
- TEFC
- 20:1 Speed Range with Constant Torque

Motor power kW	Base speed RPM	IEC Frame size	Catalog No.	Mult. Sym.	Type Number	Arm VDC	Field VDC	Arm FL Amps	Field FL Amps	Aprx. Wt (kg)
0.37	1750	D71D	VD3451D	D	3420D	180	200/100	2.6	0.25	13.2
0.75	1750	D80D	VD5318D	D	3535D	180	200/100	5.0	0.30	29.0
1.5	1750	D112D	VD6202D	D	3646D	180	200/100	11.0	0.50	51.0
2.2	1750	D132D	VD7503D	D	7544D	180	200/100	14.5	0.40	75.0

NOTES:

Type 3646D motors and larger have a thermostat (normally closed) in the winding.

Other Voltages available on request.
Prefix "V" = IEC metric flange and foot mount.

Type N^o3400 and larger will accept Tach mounting kits.

DC MOTORS - WASHDOWN DUTY

**Metric Mount Shunt wound SCR Drive
Motor TEFC, B3/B5**

0.18 thru 1.5kW

IEC D63 thru D900



Features:

- IEC Frame
- IP65 Protection, IP66 optional
- B3 & B5 Metric Flange Mount
- Permanent Magnet
- Variable Speed - Thyristor Control
- USDA Approved
- Stainless Steel Shaft and Hardware
- Neoprene gasketed conduit box
- Double sealed ball bearings
- Forsheda® running contact v-ring slinger
- Electrostatic epoxy paint coating

Motor power kW	Base speed RPM	IEC Frame size	Catalog No.	Mult. Sym.	Type Number	Arm VDC	Arm FLAmps	Aprx. Wt. (kg)	Notes
0.18	1750	D63D	VPWD3312D	D	3320P	180	1.25	12.0	¥
0.37	1750	D71D	VPWD3326D	D	3336P	180	2.5	16.1	¥
0.75	3000	D80D	VPWD3458D	D	3428P	180	5.1	18.6	
0.75	1750	D80D	VPWD3455D	D	3435P	180	5.0	22.0	
1.5	1750	D90D	VPWD3585D	D	3548P	180	9.6	35.5	

NOTES:

¥ Indicates TENV.

NEMA Mount Permanent Magnet SCR Drive Motor, TENV and TEFC, C-Face with Base



0.05 thru 3.7kW

Features:

- NEMA Frame with NEMA C Face & Foot Mount
- Permanent Magnet
- Continuous Duty
- TEFC or TENV
- IP54
- 20:1 Speed Range with Constant Torque
- Type N^o3000 and larger will accept optional Tachometer mounting kits and tachometers
- Integral Tachometer fitted to motors with 'CDPT' prefix

Motor power kW	Base speed RPM	NEMA Frame size	Catalog No.	Mult. Sym.	Type Number	Arm VDC	Arm FL Amps	Aprx. Wt (kg)	Notes
0.05	1725	—	AP233021	D	2318P-0	180	0.39	2.3	¥
0.09	1725	—	AP7421	D	2424P	180	0.65	4.7	¥
0.18	3450	—	AP7422	D	2424P	180	1.3	5.0	¥
0.18	1750	56C	CDP3310	D	3320P	90	2.5	10.9	¥
0.18	1750	56C	CDP3306	D	3320P	180	1.25	11.0	¥
0.25	1750	56C	CDP3320	D	3327P	90	3.2	12.2	¥
0.25	1750	56C	CDP3316	D	3327P	180	1.6	12.2	¥
0.37	1750	56C	CDP3330	D	3336P	90	4.8	14.6	¥
0.37	1750	56C	CDP3326	D	3336P	180	2.5	14.1	¥
0.56	1750	56C	CDP3440	D	3428P	90	7.0	17.7	
0.56	1750	56C	CDP3436	D	3428P	180	3.7	17.4	
0.75	1750	56C	CDP3445	D	3435P	90	10.0	20.0	
0.75	1750	56C	CDP3455	D	3435P	180	5.0	20.0	
0.75	1750	56C	CDPT3455	D	3435P	180	5.0	22.8	
1.1	1750	145TC	CDP3575	D	3536P	180	7.7	30.5	
1.5	1750	145TC	CDP3585	D	3548P	180	9.6	33.7	
2.2	1750	184TC	CDP3603	D	3649P	180	14.0	51.0	
3.7	1750	184TC	CDP3605	D	3688P	180	24.5	74.1	

NOTES:

Cat N^o Prefix "A" = Feet only.

Cat N^o Prefix "CD" = NEMA "C" face and removable rigid base.

Type N^o3000 and larger will accept Tach mounting kits.

Cat No. "CDPT" = Tachometer fitted 50 VDC/kRPM.

¥ = TENV motor.

NEMA Mount Shunt Wound SCR Drive Motor, TEFC C-Face with Base



0.05 thru 3.7kW

NEMA 56c thru 256U

Features:

- NEMA Frame with NEMA C face and Foot Mount
- Shunt Wound
- TEFC
- IP54
- Continuous Duty
- Class F Insulation
- 20:1 Speed Range with Constant Torque

Motor power kW	Base speed RPM	NEMA Frame size	Catalog No.	Mult. Sym.	Type Number	Arm VDC	Field VDC	Arm FL Amps	Field FL Amps	Aprx. Wt (kg)	Notes
0.18	1750	56C	CD3426	D	3413D	180	200/100	0.25	0.3	10.4	
0.25	1750	56C	CD3434	D	3413D	180	200/100	0.21	0.2	10.9	
0.37	1750	56C	CD3451	D	3420D	180	200/100	0.25	0.3	13.2	
0.56	1750	56C	CD3476	D	3428D	180	200/100	3.9	0.3	15.5	
0.75	1750	56C	CD5318	D	3535D	180	200/100	5.0	0.3	24.0	
1.1	1750	184C	CD6215	D	3636D	180	200/100	7.8	0.4	38.2	
1.5	1750	184C	CD6202	D	3646D	180	200/100	11.0	0.5	44.6	
2.2	1750	215C	CD7503	D	7544D	180	200/100	14.5	0.4	82.0	
3.7	1750	256UC	CD9105	D	9154D	180	200/100	23.0	1.0	138.2	
3.7	1750	254UC	CD9104	D	9143D	330	360	13.3	0.6	100.0	d
5.5	1750	256U	D9176	D	9154D	330	360	20.0	0.6	141.0	d

NOTES:

Type 3636D motors and larger have a thermostat (normally closed) in the winding.

Type 3400 and larger will accept tach-gen mounting kits (see accessories).

Prefix "D" = Foot mount only.

"CD" motors = NEMA "C" face and removable rigid base.

d = To be discontinued when existing stock is depleted.

Tacho kits for permanent magnet and shunt wound motors; IEC & NEMA Frames

Baldor Tacho's

- Life lubricated and sealed ball bearings
- Flange or foot mounting
- Permanent magnet fields
- Silver graphite brushes for long life and best performance



This tacho may be retrofitted to Baldor permanent magnet or shunt wound motors using the appropriate kit. The tacho generator supplies a DC voltage that is proportional to the motor rpm, and the polarity is changed with the direction of rotation. This type is both suitable for regulation within a very wide range of armature speeds, and for 4-quadrant control. It also has the advantage of generating a very low ripple-voltage, which results in good regulation at low motor rpm.

Specifications	Type BTG1000	Type PTG50XP or PFTG50XP ¥	Type PTG60XPS-M *	Type PTG100XP or PFTG100XP ¥
Voltage Gradient (V/1000rpm)	50	50	60	100
RMS Ripple	8%	0.50%	0.35%	0.50%
Maximum Speed (rpm)	5000	5000	4166	2500
Maximum Current (mA)	400	400	50	200
Armature Resistance @at 25°C (ohm)	52	155	40	105
Armature Inductance (mH)	124	127	31	86
Armature Inertia (kg.cm ²)	1.175	0.761	1.61	0.761
Maximum Terminal Voltage (VDC)	250	250	250	250
Reversing Error	2%	1%	1%	1%
Min. Load Resistance for 1% Linearity (kohm)	-	10	4	10.56
Shaft Diameter	5/16"	5/16"	11mm	5/16"
Mounting Spigot Diameter	21/2"	21/2"	85mm	21/2"
Mounting Holes & PCD	4 @ 4" PCD	4 @ 4" PCD	6 @ 100mm PCD	4 @ 4" PCD
Weight approx. (kg)	3.1	2.7	4.7	3.1
Multi. Systm.	D	D	D	D

¥ = Foot mounted, spigot and flange mounting dimensions not applicable.

* = Mechanical Interchangeable with REO444 Tacho.

Tacho - Generator & Encoder Mounting Kits

- For force Ventilated DC Motors as shown on page 9

Product Description	Baldor Motor Frame No.	Catalog No.	Mult. Sym.	Aprx. Wt. (kg)
Mounting Adaptor for Baldor Tachometers BTG/PTG50	B132 to B200	TKP1836XP	D	1.37
Mounting Adaptor for Baldor Tachometers PTG60XPS-M	B132 to B200	TKP1836XP-M	D	0.1
Mounting Adaptor for Encoder ENCOONV	B132 to B225	TKP1836ENC	D	7.72
Mounting Adaptor for Encoder ENCOONV	B250 to 4011	TKP400ENC	D	7.27

Low Voltage - Battery Powered DC Motors - 24VDC

0.37 thru 0.75 kW

NEMA 56C, 80 thru D90/B3



Features:

- Designed for fixed speed applications
- Ideal for compressors, fans or pumps
- Rigid Base or Flange Mount
- TEFC
- IP21
- 20% Compound Wound
- 24 VDC

Motor power kW	Base speed RPM	IEC Frame	NEMA Frame	Catalog No.	Mult. Sym.	Type Number	FL Amps	Volts DC	Aprx. Wt (kg)
0.37	2000	N/A	56	D3516	D	3516D	25	24	20
0.56	2000	D80-B5	N/A	VD3524D	D	3524D	32	24	26
0.75	2000	N/A	56	D3528	D	3528D	42	24	25.4
0.75	2000	D80-B5/D90-B3	N/A	VD3528D	D	3528D	42	24	26

Low Voltage - Battery Powered DC Motors - 36VDC

1.5k thru 2.6kW

NEMA 66C7, 112-B14



Features:

- 36 VDC · Series Wound
- NEMA 66CZ
- One hour duty cycle
- Exposed terminals

Motor power kW	Base speed RPM	IEC Frame	NEMA Frame	Catalog No.	Mult. Sym.	Type Number	FL Amps	Volts DC	Aprx. Wt (kg)
1.5	2800	112-B14	N/A	S4527-14	D	4527D	53	36	27.6
2.6	3400	N/A	6668	S4534	D	4534D	92	36	31.3
2.6	3400	112-B14	N/A	S4534-14	D	4534D	92	36	31.3

Low Voltage - Solar Powered - 29VDC or 58VDC

1.5k thru 2.6kW

NEMA 56



Features:

- 29 VDC or 58 VDC
- Rigid Base
- TEFC
- IP54
- Designed to be powered from solar cell systems

Motor power kW	Base speed RPM	NEMA Frame	Catalog No.	Mult. Sym.	Type Number	Full Load amps	Volts DC	Aprx. Wt (kg)
0.18	1750	56	SP410	D	3410P	8.6	29	12.3
0.25	1750	56	SP413	D	3413P	11	29	12.5
0.37	1750	56	SP420	D	3420P	7.7	58	16

Low Voltage Permanent Magnet Motor, TENV and TEFC NEMA Mount and IEC Mount 12V and 24VDC

0.09 thru 0.75kW

NEMA 56, B3/B5 and B3/B14

Features:

- Designed for fixed speed/variable directions
- For battery powered applications
- 12 VDC or 24 VDC
- Permanent Magnet
- Rigid Base or Flange Mount
- TEFC or TENV



Motor power kW	Base speed RPM	IEC Frame	Catalog No.	Mult. Sym.	Type Number	Style	FL Amps	Volts DC	Aprx. Wt (kg)	Notes
0.09	1750	D63-B14	VP7431-14	D	135P	TENV	10.1	12	5	
0.18	3000	D71B5	VP3428D-V12	D	3420P	TEFC	23.8	12	15	1
0.18	3000	D71-B14	VP3428-14-V12	D	3420P	TEFC	23.8	12	15	1
0.18	1750	D71-B5	VP3410D-V12	D	3416P	TEFC	22.5	12	14.5	1
0.18	1750	D71-B14	VP3410-14-V12	D	3416P	TEFC	22.5	12	14.5	1
0.37	1750	56C	CDP3430-V12	D	3420P	TENV	40	12	15	3
0.37	3000	D71-B5	VP3328D-V12	D	3420P	TEFC	41.9	12	17	1
0.37	3000	D71-B14	VP3328-14-V12	D	3420P	TEFC	41.9	12	17	
0.37	1750	D71-B5	VP3420D-V12	D	3420P	TEFC	37.1	12	15.5	
0.75	1750	56C	CDP3445-V12	D	3435P	TEFC	85.6	12	20.5	3
0.75	3000	D80-B5	VP3458D-V12	D	3435P	TEFC	77.3	12	22	2
0.75	1750	D80-B5	VP3455D-V12	D	3435P	TEFC	85.6	12	20.5	2
0.75	3000	D80-B14	VP3458-14-V12	D	3435P	TEFC	77.3	12	22	2
0.75	1750	D80-B14	VP3455-14-V12	D	3435P	TEFC	85.6	12	20.9	2
0.09	1750	D63-B14	VP7441-14	D	135P	TENV	4.7	24	5	
0.18	1750	56C	CDP3410-V24	D	3416P	TENV	10.6	24	13.2	3
0.18	3000	D63-B14	VP3428-14-V24	D	3320P	TEFC	10.4	24	12	
0.18	1750	D63-B14	VP3410-14-V24	D	3320P	TEFC	9.3	24	12	
0.18	1750	D63-B5	VP3410D-V24	D	3320P	TEFC	9.3	24	12	
0.25	1750	56C	CDP3420-V24	D	3416P	TENV	13.6	24	14.5	3
0.37	1750	56C	CDP3430-V24	D	3424P	TENV	19.6	24	15.5	3
0.37	3000	D71-B14	VP3328-14-V24	D	3327P	TEFC	20.6	24	12.7	
0.37	3000	D71-B5	VP3328D-V24	D	3327P	TEFC	20.6	24	12.7	
0.37	1750	D71-B5	VP3420D	D	3420P	TEFC	19	24	16.7	1
0.37	1750	D71-B14	VP3420-14	D	3420P	TEFC	19	24	16	1
0.75	3000	D80-B14	VP3458-14-V24	D	3438P	TEFC	37.7	24	26	
0.75	3000	D80-B5/D90-B3	VP3458D-V24	D	3438P	TEFC	37.7	24	26	
0.75	1750	D80-B5/D90-B3	VP3524D	D	3524P	TEFC	36	24	25.3	
0.75	1750	D90-B14	VP3524-14	D	3524P	TEFC	36	24	24	

NOTES:

These motors must have current limited to Twice Full Load Nameplate Amps, to prevent demagnetising.
 1.- Shaft centre height =76mm. 2.- Shaft centre height = 89mm. 3 - NEMA Foot & Face Mount

KBBC - Battery Powered Motor Control - 12 to 48VDC

Features:

For PM motors 12-24 or 12-48 VDC jumper selectable control via single-ended or wig-wag speed potentiometer or 0-5VDC signal following



KBBC Chassis Mount



KBBC in IP65 Enclosure

Rated Voltage VDC	Current Rating Continuous amps	Current Rating for 2 minutes amps	Current Rating Peak 15 secs amps	Catalog No.	Mult. Sym.	Aprx. Wt (kg)
12 - 24	40	60	80	KBBC-24M	D	0.6
12 - 48	40	60	80	KBBC-44M	D	0.6
KBBC in IP65 Enclosure (249H x 192W x 184D mm)						
12 - 48	40	60	80	KBBC-44ME	D	5.04

SCR Drive Motor Shunt and Stabilized Shunt Wound, DPBV Enclosure, Rigid Base - B3



4.7 thru 187kW

Metric 132 thru 250 B3

Features:

- Quality dc motors to 187kW available
- Custom motors to 550kW available
- Designed for Full Thyristor Control variable speed drives
- Class 'H' Insulation
- Stock motors are 'IP23' and are supplied as Force Ventilated IC06 with Blower
- A wide variety of options and special designs are also available
- All motors are foot mounted IM1001

Motor power kW	Nominal RPM	Motor Frame/Type	Voltage Armature	Voltage Field	Current Armature	Current Field	Blower Type	Aprx. Wt (kg)	Catalog No.	Mult. Sym.	Notes
4.7	1725	B132-218	460	360	12.7	0.55	LM3	118	D4204	D	d
6.9	1690	B132-219	460	360	18.3	0.97	LM3	126	D4206	D	d
11.4	1761	B132-2112	460	360	28.7	1.03	LM3	166	D4211	D	d
18.5	1709	B160-2513	460	360	46	1.32	LM3	315	D4318	D	d
29.4	1694	B180-2810	460	360	71.7	1.95	LM4	341	D4429	D	d
33.6	1800	B180-2813	460	360	81	2	LM4	414	D4433	D	d
40.3	1613	B200-329	460	360	97	1.88	LM6	417	D4540	D	d
50.7	1645	B200-329	460	360	122.6	1.88	LM6	417	D4550	D	d
74.6	1801	B200-3212	460	360	175	2.37	LM6	448	D4574	D	d
93.2	1870	B225-368	460	360	216	2.2	LM6	487	D4693	D	*
112	1810	B225-368	460	360	260	2.3	LM6	487	D46112	D	*
149	1810	B225-3610	460	360	346	2.2	LM9	503	D46150	D	*
187	1710	B250-4011	460	360	427	3.38	LM9	935	D46187	D	*
Metric B5 Flange Kit (Drive End) #PK8211-017 for Frame 132-B5									PK8211-017	D	d
Metric B5 Flange Kit (Drive End) #PK8251-026 for Frame ¥ 160-B5									PK8251-026	D	d

NOTES:

* = 4 Pole 'Stabilised Shunt Wound'. These motors must be derated by 5% if stabilised field not connected. Stabilised shunt motors should be connected as SHUNT ONLY when used with reversing controllers. Other motors are 4 Pole 'Straight Shunt Wound'.

¥ = Flange is non-standard M = 350mm dia.

d = To be discontinued when existing stock is depleted. Price available for existing stock only.

Popular Options

- Tacho-generators and mounting adaptor kits, see page 6
- Digital tacho-encoder
- Metric B5 Flange Kits (Drive End), see specification table

Please contact Baldor for the following options

- IC16, IC37 cooling
- Air flow sensor
- Thermistors
- Brake (ac or dc supply)
- Condensation drains and breathers
- Transparent brush inspection covers
- Brush wear indicator
- Other options are available, please contact a Baldor office for your requirements

RPM III Wound Field SCR Drive, DPBV Enclosure, 460V Armature power Code C

5.6 thru 361kW

Metric 132 thru 250 B3



Applications:

- Metals, printing, extruders, cranes, conveyors, machine tools

Features:

- Laminated square frame for improved commutation
- Tacho adaptable see page 6
- F1 mount unless otherwise specified
- Fitted with thermostats
- Power dense designs up to 360kW available ex-stock
- Up to 2.2 Megawatts available

Catalog No.	Mult. Sym.	kW	HP	Nominal RPM	Voltage		Current		Winding Type	Aprx. Wt (kg)
					Armature	Field	Armature	Field		
D4007R-BV	D	5.6	7.5	1750	460	310	14.3	1.31	Straight	114
D4010R-BV	D	7.9	10.6	1750	460	310	20.5	1.83	Straight	125
D4013R-BV	D	9.7	13	1750	460	310	24	2.43	Straight	146
D4015R-BV	D	11.4	15.3	1750	460	310	30	3.54	Straight	154
D4023R-BV	D	17.4	23.3	1750	460	310	45.5	3.54	Straight	166
D4027R-BV	D	20.75	27.8	1775	460	310	52.5	3.5	Straight	180
D4033R-BV	D	24.75	33.2	1685	460	310	64	3.92	Straight	214
D4039R-BV	D	29.2	39.1	1750	460	310	73.5	3.59	Straight	252
D4051R-BV	D	38.7	51.9	1750	460	310	97	3.77	Straight	266
D4063R-BV	D	47.5	63.7	1750	460	310	117	5.44	Straight	309
D4081R-BV	D	61	81.8	1725	460	310	149	5.75	Straight	375
D40101R-BV	D	76	101.9	1750	440	310	190	8.71	Straight	364
D40122R-BV	D	91.7	122.9	1750	460	310	221	5.66	Straight	466
D40155R-BV	D	116.1	155.6	1750	460	310	279	6.22	Straight	509
D40201R-BV	D	150	201	1750	460	310	353	7.45	Straight	666
D40241R-BV	D	180	241.2	1750	460	310	422	9.68	Straight	718
D40308R-BV	D	230	308.2	1825	460	310	535	11.1	Straight	908
D40400R-BV	D	298.7	400	1750	460	310	691	13.3	Straight	1276
D40455R-BV	D	339.8	455.4	1750	460	300	788	5.54	Straight	1583
D40483R-BV	D	360.5	483.1	1640	460	310	835	12.4	Straight	1521

Tacho Mounting Kits

kW Range	Catalog No.	Mult. Sym.
5.6 - 11.4 kW	413336-1R	D
17.4 - 76kW	417708-21	D
91 - 360kW	417708-26	D
340kW	417708-156	D

Encoder Kits

kW Range	Stub Shaft Catalog No.	Encoder & Cover Catalog No.
5.6 - 9.7 kW	422962-51-J	607980-163-B
11.4 - 76kW	422962-51-CS	
91.7 - 360kW	422962-52-BW	
339.8kW	422962-52-BE	

DC Gearmotor - Parallel Shaft

0.009 thru 0.37kW



Features:

- Permanent Magnet Motor
- Continuous Duty
- TENV
- IP54
- Hardened Steel Helical Gears, Replaceable
- Diecast Alloy Housing & Flange Mount Face
- Suit Horizontal or Vertical Mounting
- Optional foot mounting or L-brackets available
- Synthetic Oil Filled Gearbox (Oil MOBILITH SHC007)
- Reversible

Motor Power kW	Base Speed RPM	Max. Cont. Trq. Nm	Catalog No.	Mult. Sym.	Type Number	Ratio : 1	Arm. VDC	Arm. FL Amps	Aprx. Wt. (kg)
0.009	5.7	10.6	GPP233124	D	2314P-PSSH-0	300	180	0.13	3.6
0.015	5.7	20.6	GPP233142	D	2314P-PSM-0	300	180	0.17	3.6
0.015	9.5	10.6	GPP233125	D	2314P-PSSH-0	180	180	0.16	3.6
0.03	9.5	24.5	GPP233143	D	2314P-PSM-0	180	180	0.3	3.6
0.03	19	13.3	GPP233120	D	2314P-PSSH-0	90	180	0.29	3.6
0.03	57.5	5.65	GPP233121	D	2318P-PSSH-0	30	180	0.34	3.6
0.05	42	8.62	GPP233126	D	2318P-PSSH-0	40	180	0.43	3.6
0.062	19	25.6	GPP12568	D	125-PSM-0	90	180	0.44	6.8
0.062	43	12.5	GPP12525	D	2420P-PSSH-0	40	180	0.5	5
0.062	250	2.2	GPP12521	D	2416P-PSSH-0	10	180	0.5	5
0.09	8.3	37	GPP7479	D	2416P-PSL-0	300	180	0.38	7.7
0.09	42	19.7	GPP12567	D	2416P-PSM-0	60	180	0.65	5
0.09	83	9.8	GPP12564	D	2416P-PSM-0	30	180	0.65	5
0.09	114	6.48	GPP12527	D	2420P-PSSH-0	15	180	0.65	5
0.09	175	4.4	GPP12528	D	2420P-PSSH-0	10	180	0.65	5
0.09	250	3.28	GPP12561	D	2416P-PSM-0	10	180	0.65	5
0.09	500	1.69	GPP12560	D	2416P-PSM-0	5	180	0.65	5
0.18	14	38.4	GPP7478	D	2424P-PSL-0	180	180	0.5	7.7
0.18	21	35.6	GPP7477	D	2424P-PSL-0	120	180	0.62	7.7
0.18	42	31.6	GPP7476	D	2424P-PSL-0	60	180	1.1	7.7
0.18	62	24.9	GPP7475	D	2424P-PSL-0	40	180	1.2	7.7
0.18	83	17.5	GPP7474	D	2424P-PSL-0	30	180	1.1	7.7
0.18	125	11.3	GPP7473	D	2424P-PSL-0	20	180	1.2	7.7
0.18	165	7.9	GPP7472	D	2424P-PSL-0	15	180	1.2	7.7
0.18	250	5.08	GPP7471	D	2424P-PSL-0	10	180	1.1	7.7
0.18	500	2.82	GPP7470	D	2424P-PSL-0	5	180	1.2	7.7
0.25	58	36	GPP3370	D	327-PSLH-0	30	180	1.5	16
0.25	115	18.5	GPP3374	D	327-PSLH-0	15	180	1.5	16
0.25	345	6.2	GPP3378	D	327-PSLH-0	5	180	1.6	16
0.37	83	38.1	GPP3380	D	327-PSLH-0	30	180	2.5	16
0.37	167	19.3	GPP3384	D	327-PSLH-0	15	180	2.5	16
0.37	500	6.4	GPP3388	D	327-PSLH-0	5	180	2.5	16

NOTES:

"B" Steel Foot Mount. Bolts to bottom of PSM gearbox

"L" Type Mounting Bracket to mount type PSSH

"L" Type Mounting Bracket to mount type PSL & PSLH

B92.

LB73.

LB74.

L brackets securely mount to gear face in 90° locations for floor, wall or ceiling mount.

DC Gearmotors - Right Angle Shaft

0.15 thru 0.18kW

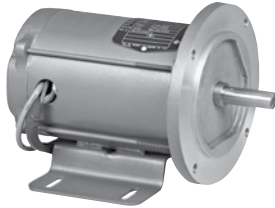
**Features:**

- Permanent Magnet Motor
- Continuous Duty
- TENV
- IP54
- Hardened Steel Worm - Replaceable
- Precision Hobbed Bronze Gear, Replaceable
- Synthetic Oil Filled Gearbox (Oil MOBILITH SHC634) lubricated for life
- Internal Expansion Bladder on Type BA, CB and JK gearboxes to accommodate pressure build-up
- Suitable for Horizontal or Vertical Mounting
- Reversible
- Baked Enamel Finish

Motor power kW	Base speed RPM	Max. Cont. Trq. Nm	Catalog No.	Mult. Sym.	Type Number	Ratio : 1	Arm. VDC	Arm. FL Amps	Aprx. Wt (kg)
0.015	8.5	7.4	GP233028	D	2314P-DA-0	310.5	180	0.26	3.2
0.03	19	7.2	GP233027	D	2314P-DA-0	130	180	0.31	3.2
0.038	60	3.7	GP233023	D	2318P-BA-0	30	180	0.42	3.2
0.05	40	6.4	GP233026	D	2318P-CB-0	45	180	0.42	3.6
0.05	53	5.4	GP233025	D	2318P-CB-0	33	180	0.4	3.6
0.05	76	3.7	GP233024	D	2318P-CB-0	22.5	180	0.45	3.6
0.05	86	3.4	GP233022	D	2318P-BA-0	20	180	0.42	3.2
0.05	173	2	GP233021	D	2318P-BA-0	10	180	0.42	3.2
0.09	8	17	GP7432	D	125P-EB-0	450	180	0.55	6
0.09	12	17	GP7431	D	125P-EB-0	150	180	0.6	6
0.09	23	14.1	GP7430	D	2424P-EB-0	75	180	0.6	6.8
0.09	30	8.5	GP7424	D	2420P-JK-0	58	180	0.45	6.3
0.09	38	11.3	GP7423	D	2420P-JK-0	45	180	0.6	6.3
0.09	52	8.5	GP7422	D	2420P-JK-0	33	180	0.6	6.3
0.09	78.2	6.8	GP7421	D	2420P-JK-0	22.5	180	0.6	6.3
0.09	173	3.61	GP7420	D	2420P-JK-0	11	180	0.65	6.3
0.09	173	3.61	GP7420-V12	D	2420P-JK-0	11	180	10.5	6
0.15	50	13.6	GP7428	D	2428P-JK-0	45	180	1.1	6.3
0.18	20	19.8	GP7429	D	2424P-EB-0	180	180	1	6.8
0.18	68	15.3	GP7425	D	2428P-JK-0	45	180	1.3	6.4
0.18	76	11.3	GP7427	D	2428P-JK-0	45	180	1.3	6.3
0.18	104	8.5	GP7426	D	2428P-JK-0	33	180	1.3	6.3
0.18	314	3.61	GP7433	D	2428P-JK-0	11	180	1.3	6.3

DC Brushless Motor

0.18 thru 2.1kW



Features:

- Precise speed/constant torque over wide range
- Adjustable speed packages from ¼ to 3HP
- Easy to setup, install and operate
- Control accepts industry standard +/- 10Vdc or potentiometer input for speed command
- Durable brushless motor with Hall sensors
- UL, cUL, CE

Motor Power kW	BUS Volts VDC	Base Speed RPM	Max. Cont. Trq. Nm	Catalog No.	Mult. Sym.	Weight
0.18	320	1800	0.98	BSM25C-1177MHC	D	5.9
0.37	320	1800	1.97	BSM25C-2177MHC	D	6.4
0.37	320	1800	1.97	BSM33C-2177MHQ	D	8.6
0.75	320	1800	3.95	BSM33C-3177MHQ	D	10
1.1	320	1800	6.49	BSM33C-4177MHQ	D	13.1
1.5	320	1800	7.91	BSM33C-5177MHQ	D	13.6
2.2	320	1800	11.86	BSM33C-5177MHQ	D	14.1

KBBL Series - Chassis/IP-20 Brushless DC Drive Series

1.5 thru 9kW



Features:

- High Torque - Drive can maintain constant torque throughout the extended speed range
- Speed Control Accuracy - Better than 0.5% with load and line
- Peak Current: Two times rated current, continuous for 3 seconds
- Voltage Doubling - Allows 300 Volt motors to be used on drives with 115 Volt AC line input
- Signal Isolation - All signal input connections, speed reference connections, and Hall connections are isolated from the AC line. Standard on all models
- Speed Command - Accepts industry standard +/-10 Volt DC bidirectional signal output
- OEM Applications - Braking capability, PWM speed reference, Programming Kit1 and Modbus communication2
- Automatic/Manual Start, Braking
- Simple to operate- Does not require programming
- Industry standard mounting
- Diagnostic LEDs - Power on (PWR) and drive status (ST)
- Jall Sensor Feedback - Standard hall I,B,C +5V, Common; 60/120 degree jumper selectable
- Trimptot Adjustments - maximum Speed, Current Limit, Repsonse, Acceleration, Deceleration, Input Signal Scaling, Input Signal Offset, Braking
- Finger-Safe Cover - Meets IP-20 standard
- Motor Overload (I2t) with RMS Current Limit
- Electronic Inrush Current Limit (EICLTM)
- Short Circuit - Prevents drive failure if a short circuit occurs at the motor (phase to phase)
- Hall Sensor Input Protection
- Motor Filter - Reduces harmful voltage spikes to the motor
- Undervoltage and Overvoltage
- MOV input transient suppression
- Microcontroller self monitoring and auto-reboot

115/230 VAC, 1-Phase Input - 230 VAC 3-Phase Output

Maximum Motor kW ¹	Input Voltage VAC	Phase	Max. Cont. Load Current Amps AC	Catalog No.	Mult. Sym.
0.18	115/230	1	1.5	KBBL-22D	D
0.37	115/230	1	2.4	KBBL-23D	D
0.75	115/230	1	4	KBBL-24D	D
1.13	115/230	1	5.5	KBBL-26D	D
1.5	230	1,3	6.7	KBBL-27	D
2.25	230	3	9	KBBL-29	D

NOTES:

1. Requires optional software. 2. Future availability.