

LIFTING COLUMN LP2



LP2: Max. thrust 6300 N (push only)

Features:

- LP2 is a specially designed telescopic aluminium lifting column incorporating a LINAK® 24 V DC linear actuator.
- It is designed to provide vertical lifting (push only) where simultaneous bending and torsion moments may occur
- LP2 lifting columns are available in 2 versions, the LP2-2 (small column) and the LP2-5 (large column)
- Thrust up to 6300 N with gas spring (push only)
- In each end of the column there is a black painted steel plate, in which there are 4 holes for the fastening of the column
- Robust anodised aluminium surface
- Extremely low noise level
- Elegant and compact design
- Cable: black 2,4 m straight supply fitted with jack-plug
- Standard protection class: IP 51
- Ambient temperature +5°C to +40°C
- Colour: anodised aluminium
- Duty cycle: 2/18; 2 minutes continuous use followed by 18 minutes not in use.
- LP2 is compatible with CB8, CB12, CB14 or CB18

Options:

- Reed-switch (for parallel and memory functions)
- Safety nut
- Mounting bracket on the side of the column. (E.g.: control boxes can be fastened directly to the lifting column)
- Gas spring for increased lifting capacity (only LP2-5)

The LP2 range of vertical lifting columns is ideal where vertical positioning of substantial loads is required.

The design allows the LP2 range to be built in a complete motion control system simply by adding a suitable LINAK control box and handset.

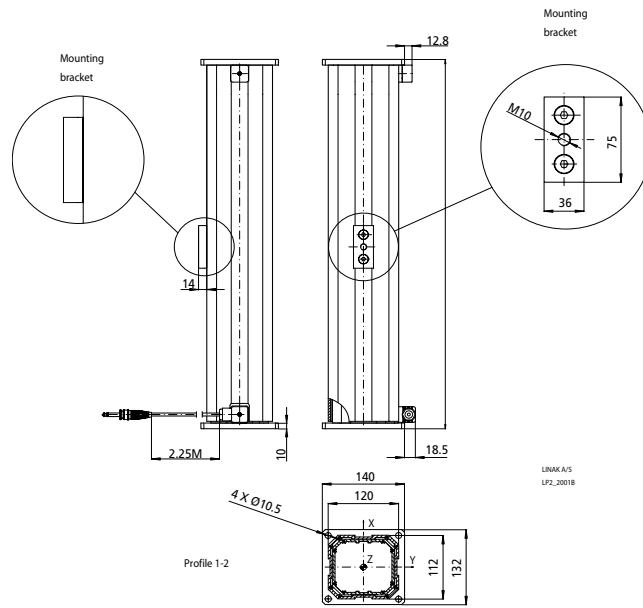
Advanced design and high quality construction allows the column to be operated either as single or parallel with up to a maximum of four units and/or with a memory function.

The LP2 lifting column is the ideal choice for duties such as height adjustment on computer workstations, work benches or a wide selection of other duties.

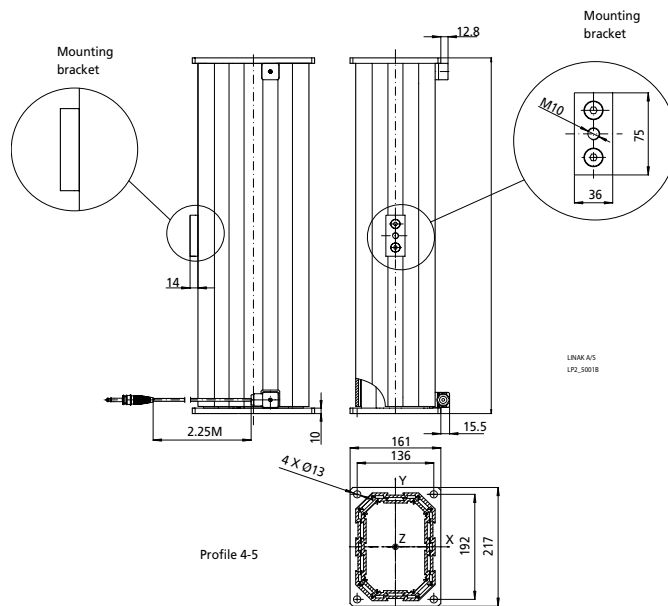
LINAK®

WE IMPROVE YOUR LIFE

Dimensions: Profile 1-2



Dimensions: Profile 4-5



Technical specifications:

Type (Actuator inside)	Push max.	Push max. with spring (N)	Typical speed at 0/full load (mm/s)	Typical amp. at 0/full load (24V)	Build-in "I" Stroke length "S"				Profile No.	Max. bending Moment* (static values)		
					(mm)					Mx (Nm)	My (Nm)	
LP2-2.1 (285xx0-xxxxx10x)	2600	-	9/6.2	1/4.4	I	405	505	630	670	1-2	700	550
					S	200	300	425	500			
LP2-2.2 (282xx0-4xxxx10x)	1600	-	21/13	1.5/4.4	I	405	505	630	670	1-2	700	550
					S	200B	300B	425B	465B			
LP2-5.1 (285xx0-xxxxx10x)	2600	3300	9/6.2	1/4.4	I	405	505	630	670	4-5	1600	1000
					S	200/200G	300/300G	425/425G	500/500G			
LP2-5.2 (301xx0-xxxxx40x)	3600	4300	6/5	1/4.5	I	405	505	60	670	4-5	1600	1000
					S	200/195G	300/295G	425/420G	500/500G			
LP2-5.3 (302xx0-xxxxx40x)	1600	2300	12/10.5	1/4	I	405	505	630	670	4-5	1600	1000
					S	200/195BG	300/295BG	425/420BG	500/460BG			
LP2-5.4 (303xx0-4xxxx40x) (303xx0-5xxxx40x)	1000	-	18/15	1/4	I	405	505	630	670	4-5	1600	1000
					S	195B	295B	420B	460B			
LP2-5.5 (30Kxx0-xxxxx40x)	5600	6300	7/5	1.2/5	I	405	505	630	670	4-5	1600	1000
					S	150/150AS	250/250AS	400/400AS	400/400AS			
LP2-5.6 (282xx0-4xxxx10x) (282xx0-5xxxx10x)	1600	2300	21/13	1.6/4.4	I	405	505	630	670	4-5	1600	1000
					S	195BG	295BG	420BG	460BG			

B = Including brake
 G = Including gas spring.
 AS = Stroke length for LP with KAS actuator

Speed values: average values, measured with column and stable power supply, without gas spring mounted.



The speeds mentioned above are at load on the Z-axis of the LP.

The column can only be loaded with the maximum bending moment over the first 80% of the stroke.

Above this 80% figure, the maximum bending moment will be reduced to 50%.

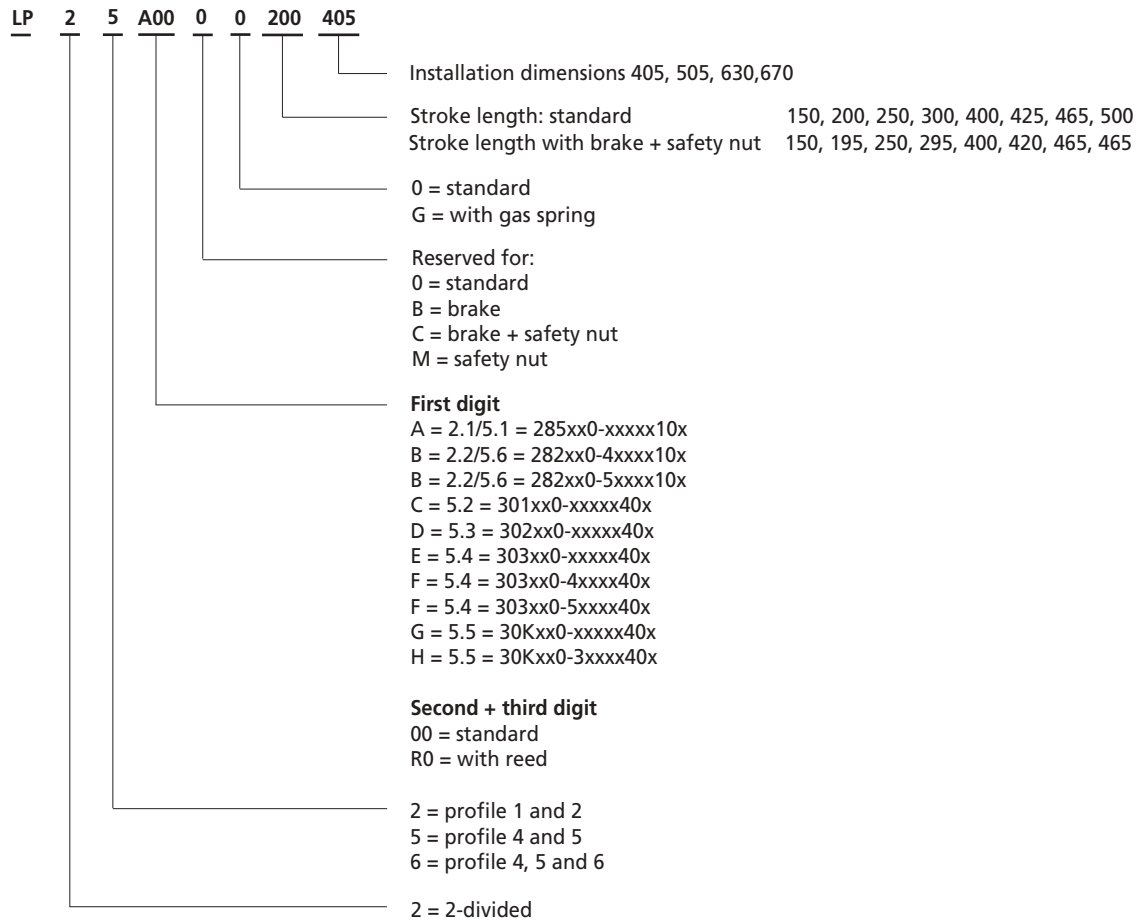


The column must only be mounted with the largest profile uppermost.



LP2

Ordering example:



Mounting brackets have to be ordered separately
 Order number: 052129 (inc. 2 mounting screws)

Specifications subject to change without prior notice.
 It is the responsibility of the product user to determine the suitability of LINAK A/S products for a specific application. LINAK will at point of delivery replace/repair defective products covered by the warranty if promptly returned to the factory. No liability is assumed beyond such replacement/repair.



LIFTING COLUMN LP3



LP3: Max. thrust 2400 N (push only)

Features:

- *Extremely low noise level*
- *Robust anodized aluminium surface*
- *Elegant and compact design*
- *In each end of the lifting column there is a black steel plate with 4 holes for mounting.*
- *Ambient temperature +5°C to +40°C*
- *Max. force: 2400 N, push only (depending on the type)*
- *Two straight cables fitted with 6.3 mm jack-plug*
- *LINAK LP3 is a specially designed lifting column incorporating 2 LINAK® 24 V DC linear actuators.*
- *LP3 is designed to provide vertical lifting where simultaneous bending and torsion moments may occur*
- *Colour: anodised aluminium*
- *Duty cycle: 2/18; 2 minutes continuous use followed by 18 minutes not in use.*
- *LP3 is compatible with CB8, CB12, CB14 or CB18*

Options:

- *Reed switch (for parallel and / or memory drive)*
- *Safety nut*
- *Mounting bracket on the side of the column (control boxes can be fixed directly to the lifting column).*

LP3 is developed for vertical lifts and can resist a bending moment by virtue of the effective telescopic system.

The lifting column is designed for applications where a small installation dimension is requested without compromising the lifting capacity. The LP3 is characterised by having a lower installation dimension proportional to the stroke length compared with LP2. LP3 can also attain a higher speed than LP2.

The telescopic column is compatible with LINAK's control boxes and can run individually; as 2 x LP3 in parallel and/ or with memory.

The LP3 is the perfect choice for height adjustment on dental, gynaecologist and wheel chairs as well as for operating-, office- and working benches etc.

LINAK® 

WE IMPROVE YOUR LIFE

Technical specifications:

Type (Actuator inside)	Push max.	Typical amp. column speed (mm/s)		Typical amp. (24V)		Build-in "I" Stroke length "S"				Profile No.	Max. bending		
		no load	full load	no load	full load	(mm)					Mx (Nm)	My (Nm)	
LP3-6.1 (285xx0-xxxxx10x)	2400	18	12.4	2 x 1.0	2 x 5	I	360	405	460	550	4-5-6	600	375
						S	300	350	400	600			
LP3-6.7 (281xx0-xxxxx00x)	1400	16	8.4	2 x 0.7	2 x 2.5	I	360	405	460	550	4-5-6	600	375
						S	300	350	400	600			
LP3-6.8 (285xx0-xxxxx00x)	1700	12	7	2 x 0.7	2 x 2.5	I	360	405	460	550	4-5-6	600	375
						S	300	350	400	600			

Speed values: average values, measured with column and stable power supply.

The speed max. is measured at zero load and with both actuators driving simultaneously.

LP3 has 2 actuators and will therefore be supplied with 2 cables and jack-plug.

The cables have to come out of the smallest profile (212 x 156 see drawing).



The speed mentioned above are at load on the Z-axis of the LP.

The column can only be loaded with the maximum bending moment over the first 80% of the stroke.

Above this 80% figure, the maximum bending moment will be reduced to 50%.

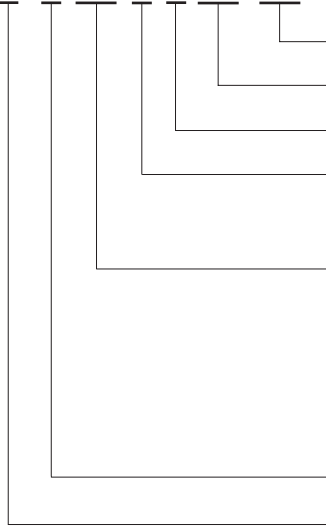


The column must only be mounted with the largest profile uppermost.

LP3

Ordering example:

LP 3 6 A00 0 0 300 360



Installation dimensions 360, 405, 460, 550

Stroke length: 300, 350, 400, 600

0 = standard

Reserved for:
0 = standard
M = safety nut

First digit

A = 6.1 = 285xx0-xxxxx10x
G = 6.7 = 281xx0-xxxxx00x
H = 6.8 = 285xx0-xxxxx00x

Second+third digit

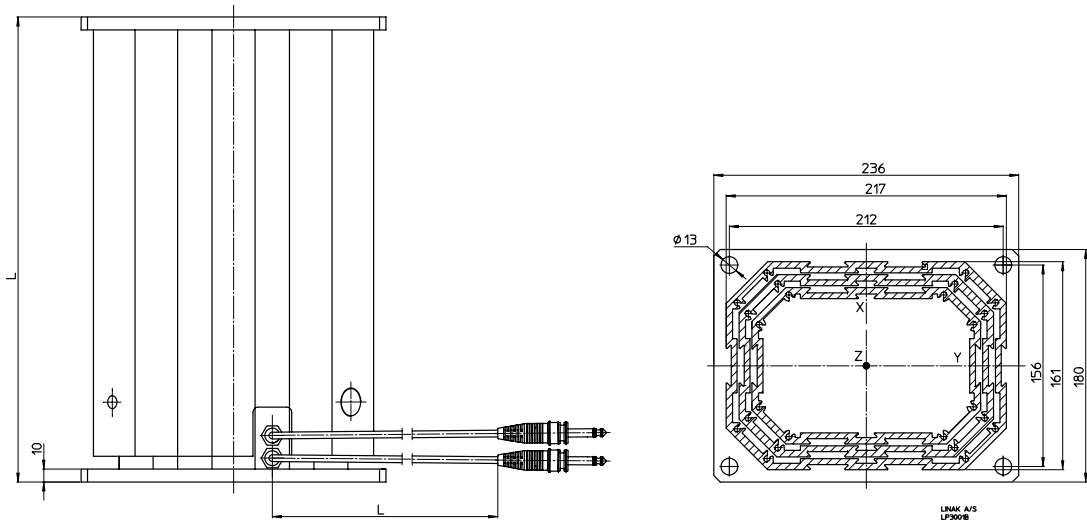
00 = standard
R0 = with reed

6 = profile 4, 5 and 6

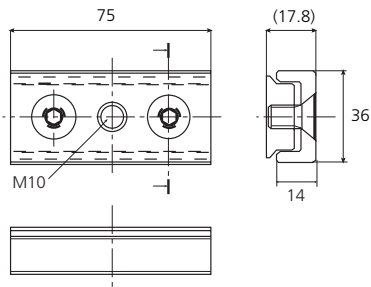
3 = 3-sections



Dimensions:



Mounting Bracket





Specifications subject to change without prior notice.
It is the responsibility of the product user to determine the suitability of LINAK A/S products for a specific application. LINAK will at point of delivery replace/repair defective products covered by the warranty if promptly returned to the factory. No liability is assumed beyond such replacement/repair.

